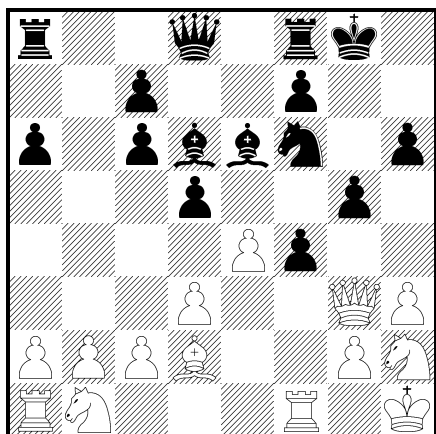


Antonín SURMA

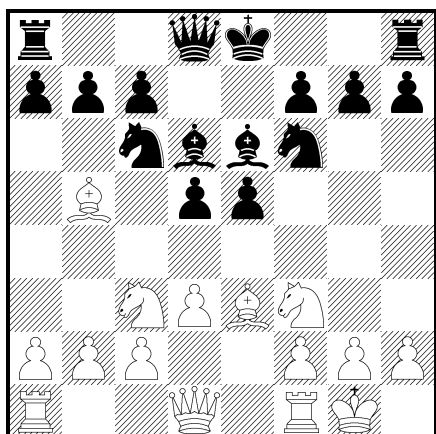
PROCVIČENÍ TAKTIKY PRO HRÁČE III.VT

I



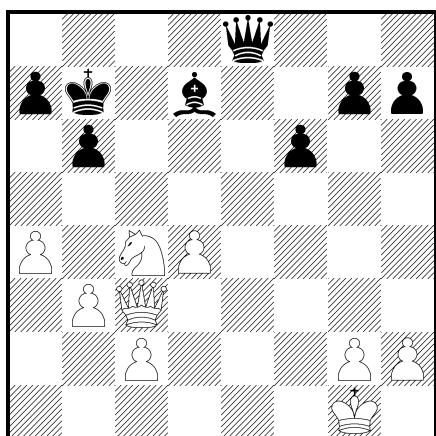
Může bílý hrát ♕xf4 , co odpoví černý?

II



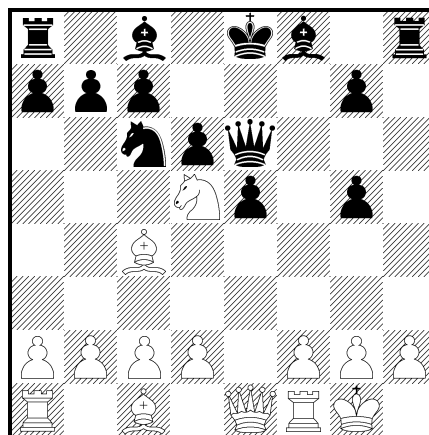
ČNT

III



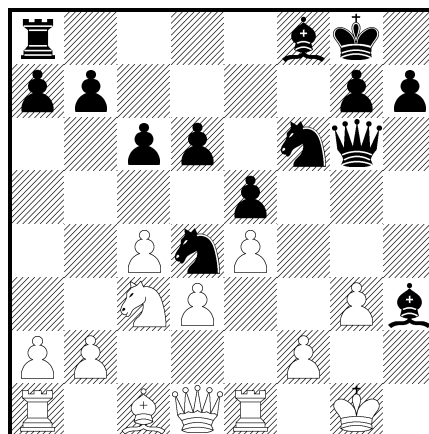
BNT

IV



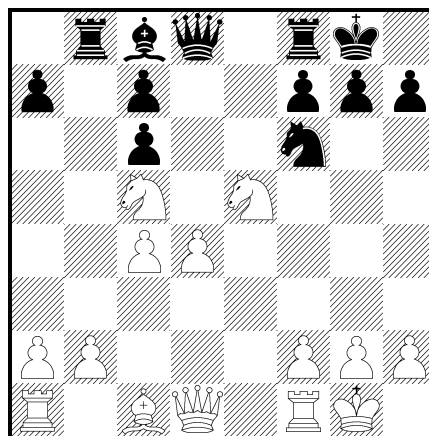
BNT

V



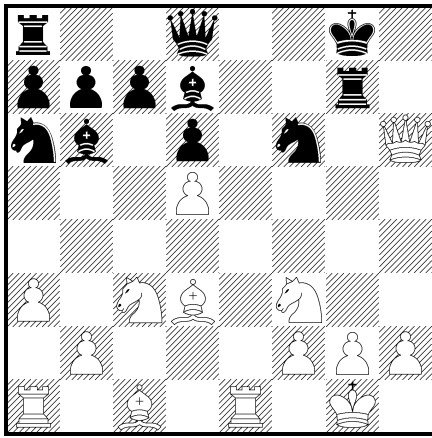
ČNT

VI



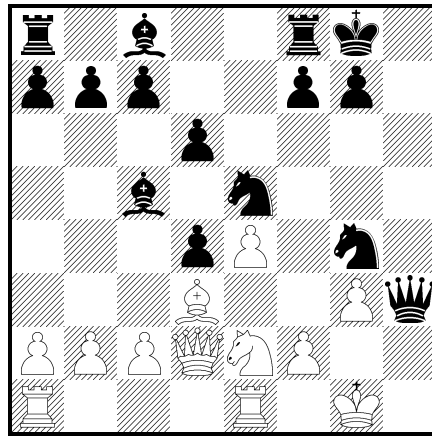
BNT

VII



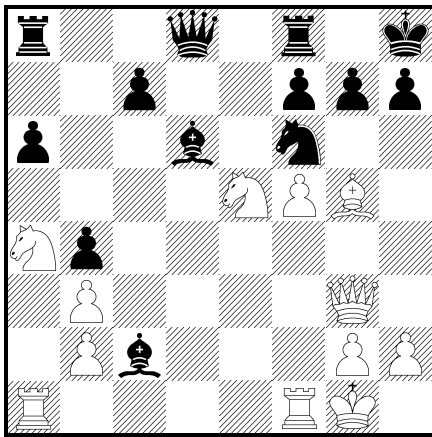
ĈNT

X



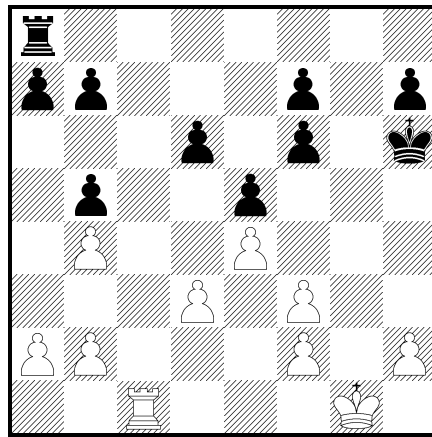
ĈNT

VIII



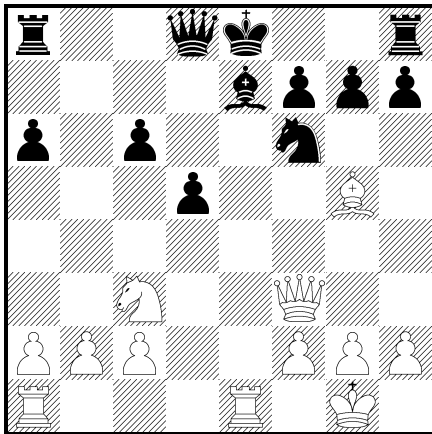
ĈNT

XI



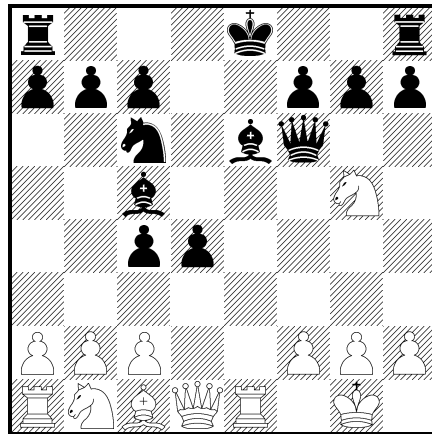
BNT

IX



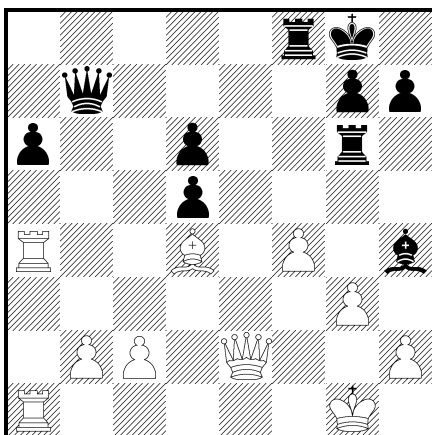
BNT

XII

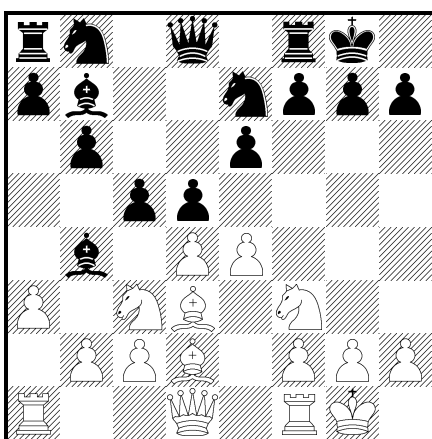


BNT

XIII

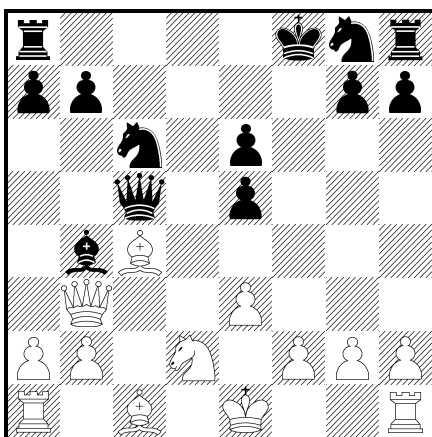


Může černý zahrát ♞xf4 ? Co odpoví bílý?
XIV



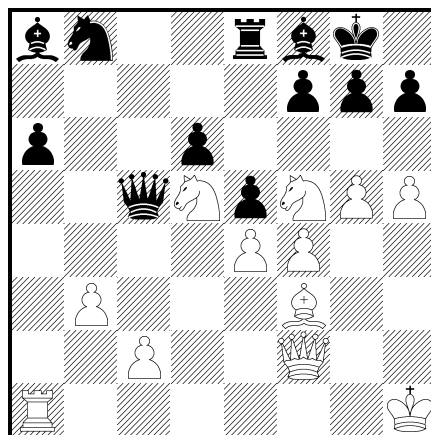
ČNT

XV



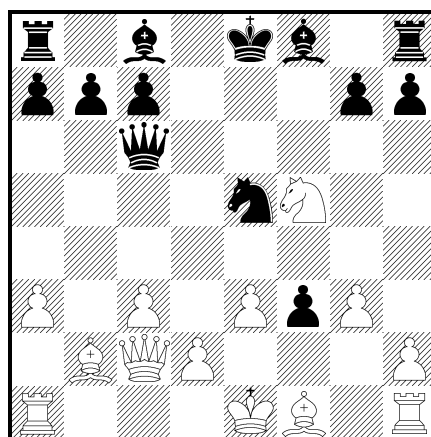
ČNT

XVI



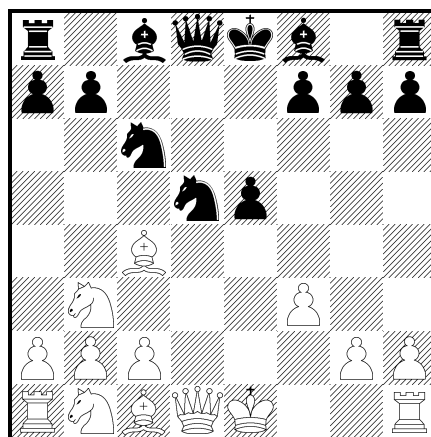
BNT

XVII



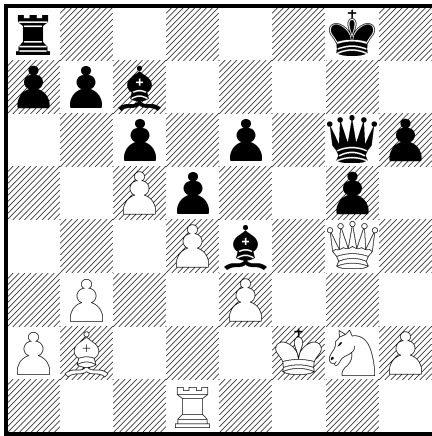
ČNT

XVIII



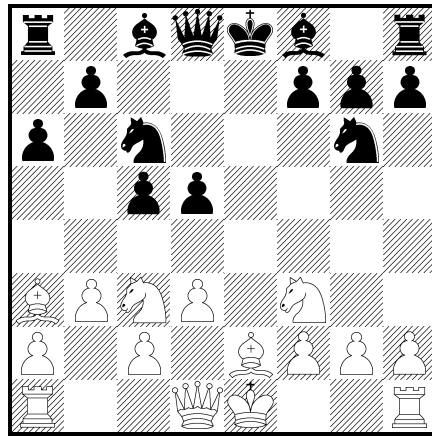
ČNT

XIX



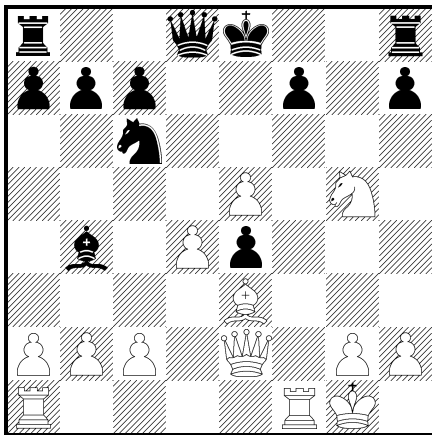
ČNT

XXII



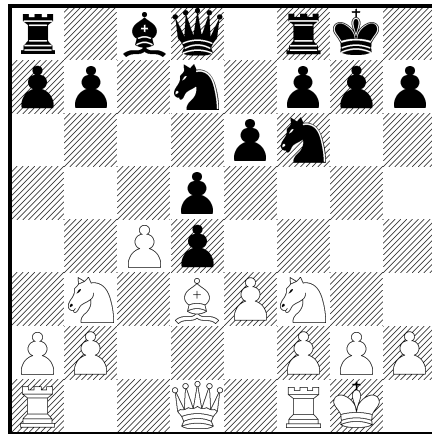
ČNT

XX



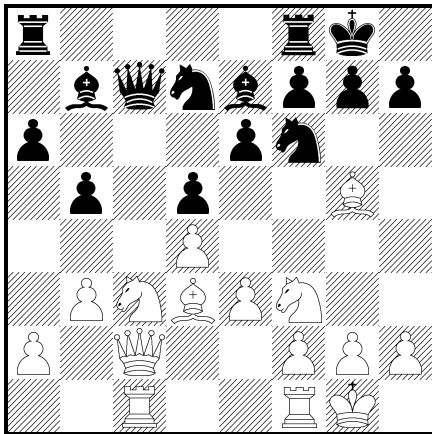
Černý zahrál ... ♞xd4 , co odpoví bílý?
XXI

XXIII

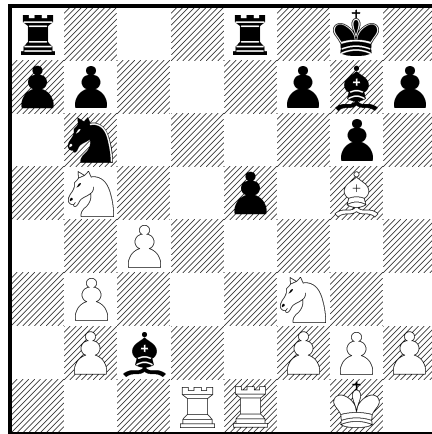


Bílý zahrál ♞xd4 , co odpoví černý?

XXIV

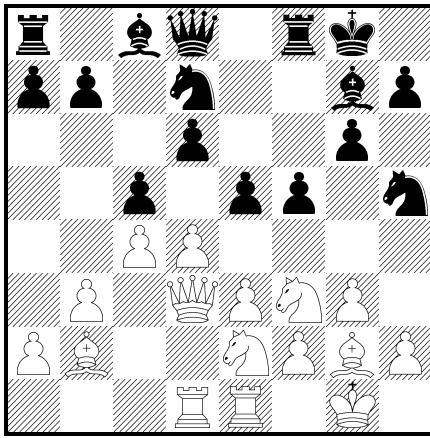


BNT



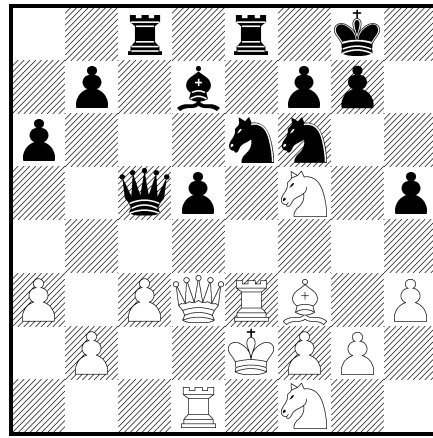
Černý zahrál ♞c2 , jak bude pokračovat bílý?

XXXI



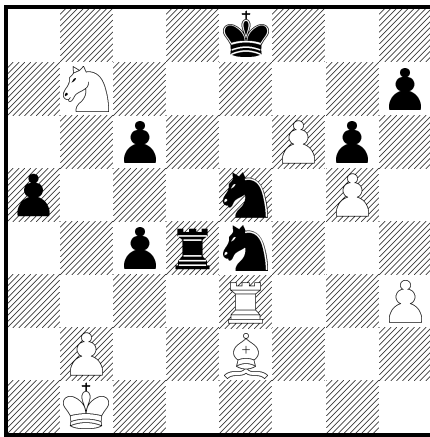
BNT

XXXIV



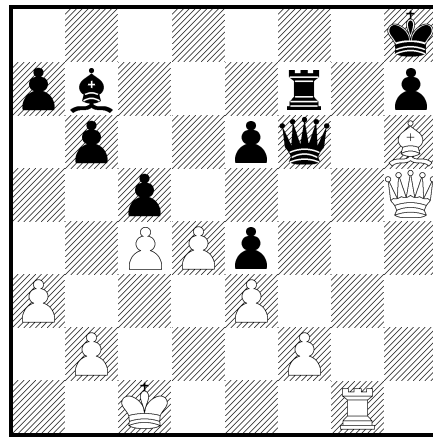
ĆNT

XXXII



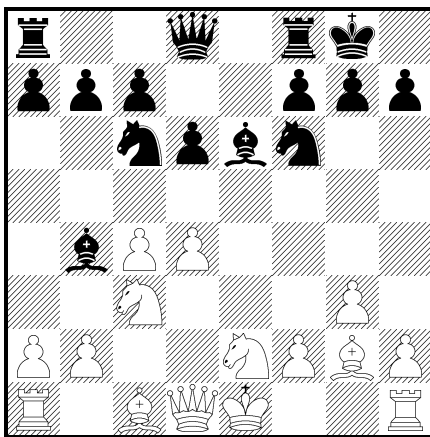
BNT

XXXV



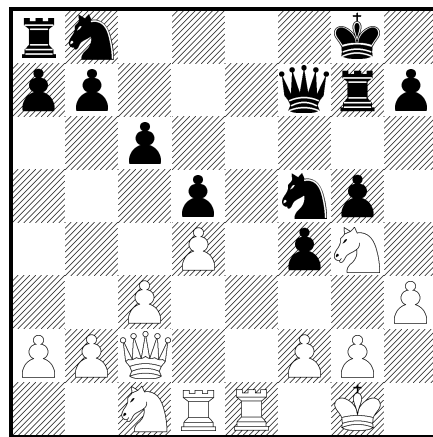
BNT

XXXIII



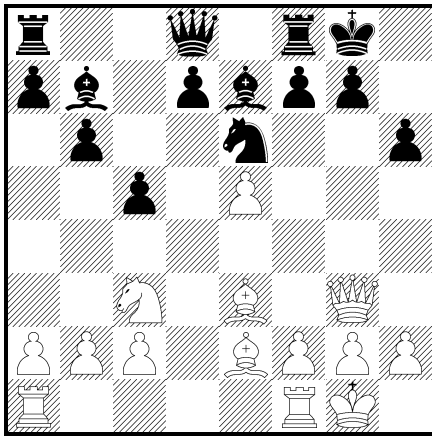
BNT

XXXVI



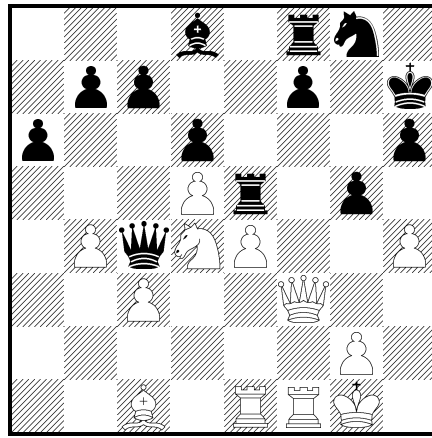
BNT

XXXVII



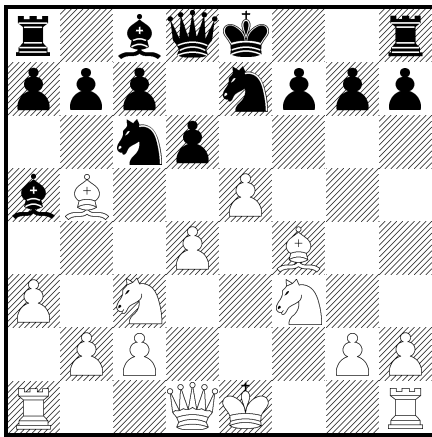
BNT

XL



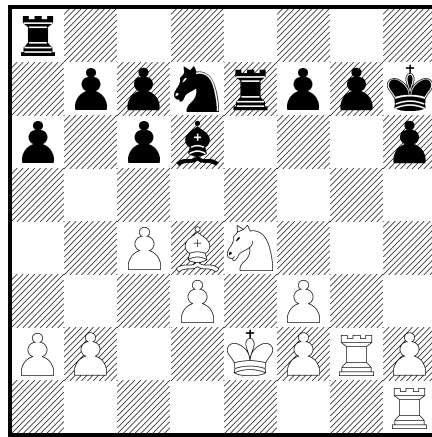
BNT

XXXVIII



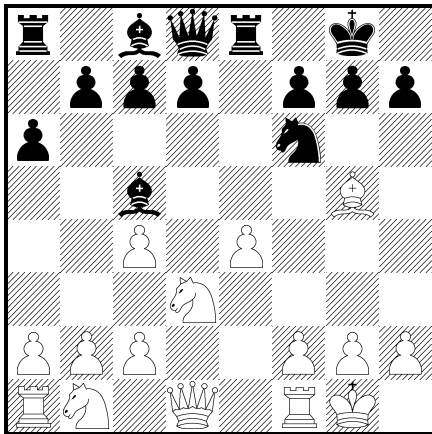
BNT

XLI



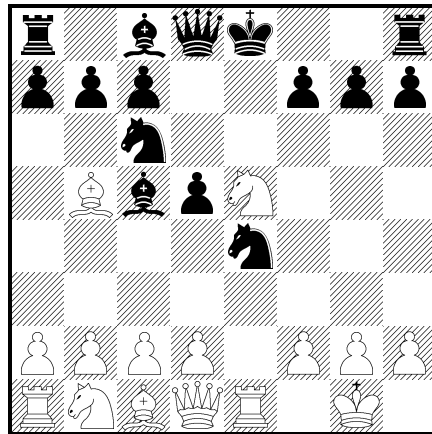
ČNT

XXXIX



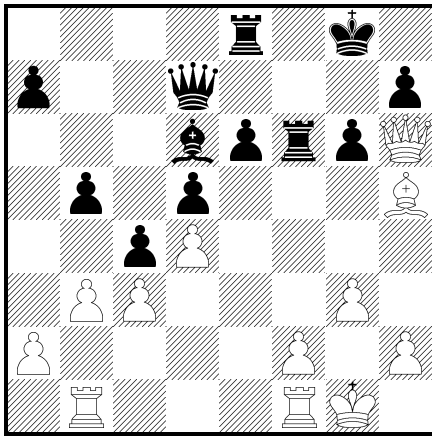
Co zahraje bílý po ♔b6?

XLII



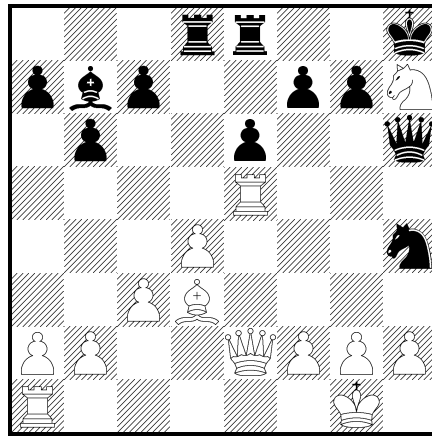
BNT

XLIII



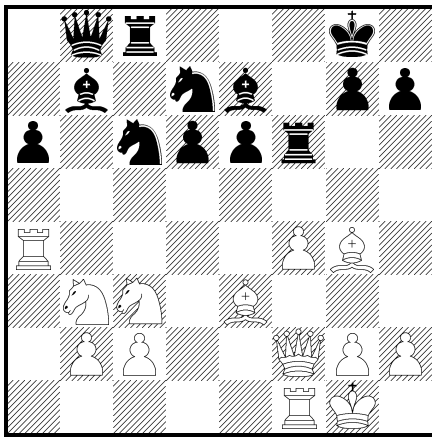
ĈNT

XLVI



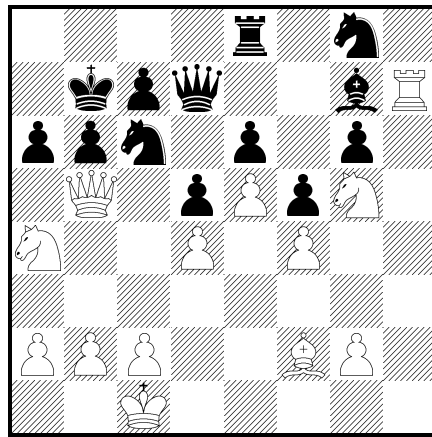
BNT

XLIV



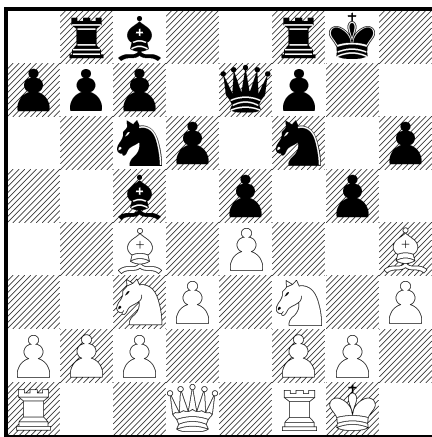
BNT

XLVII



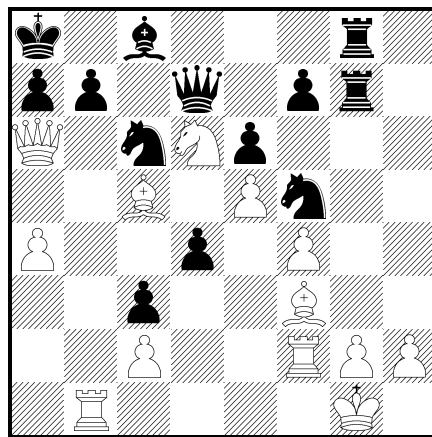
BNT

XLV



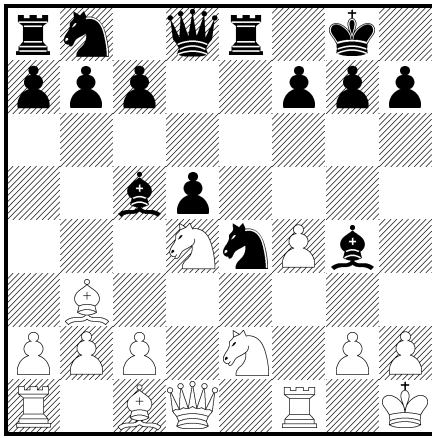
BNT

XLVIII



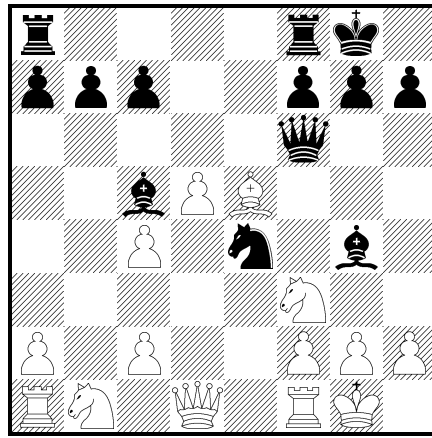
BNT

IL



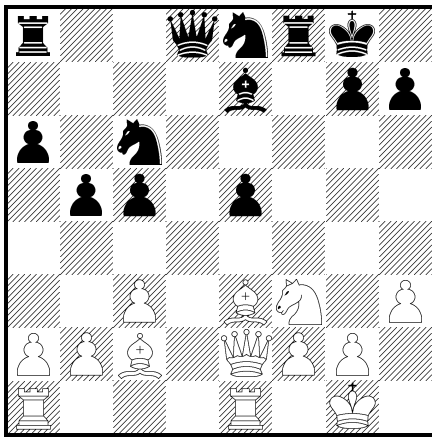
ČNT

LII



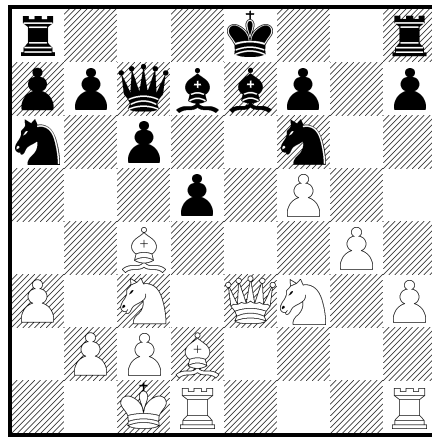
ČNT

L



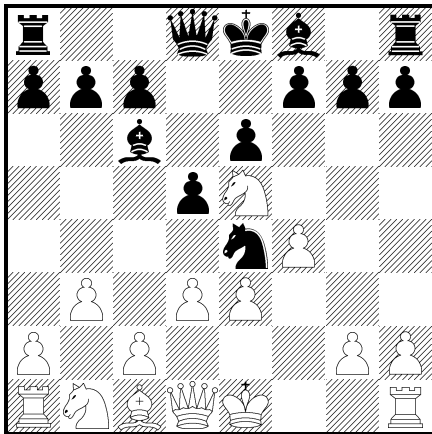
BNT

LIII



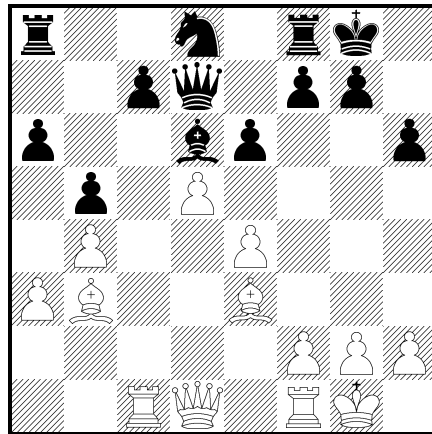
BNT

LI



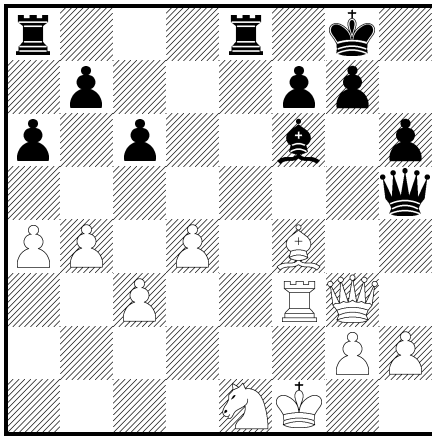
ČNT

LIV



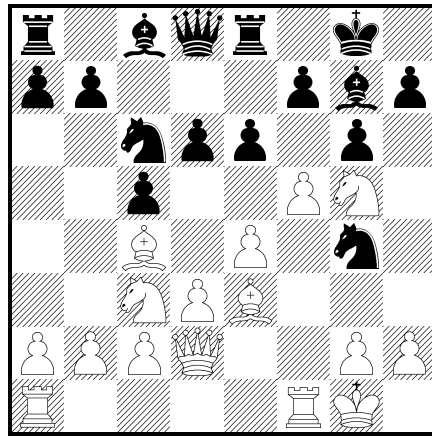
BNT

XL



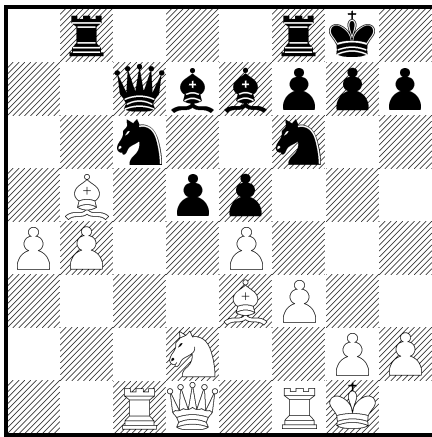
ĈNT

LVIII



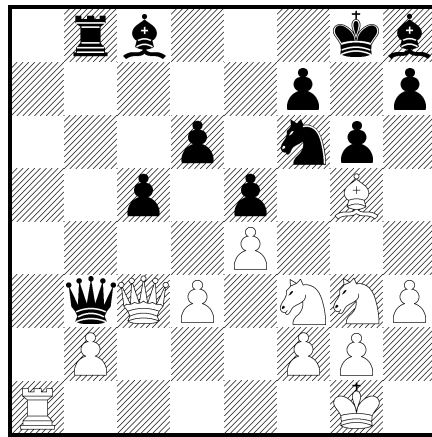
ĈNT

LVI



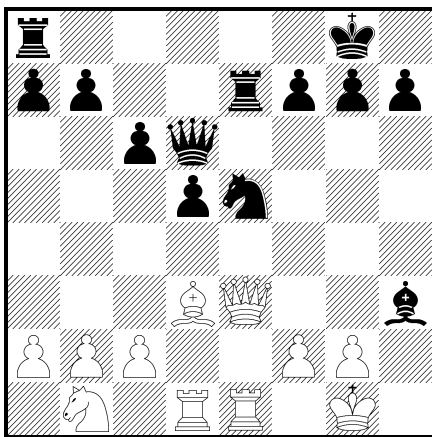
BNT

LIX



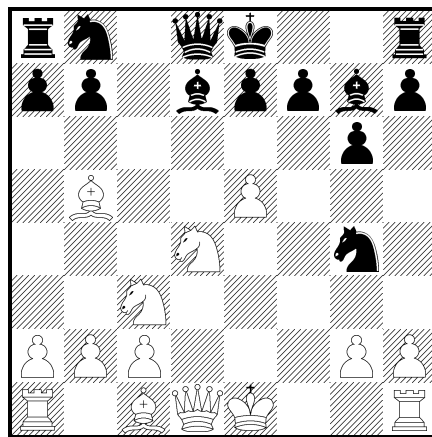
BNT

LVII



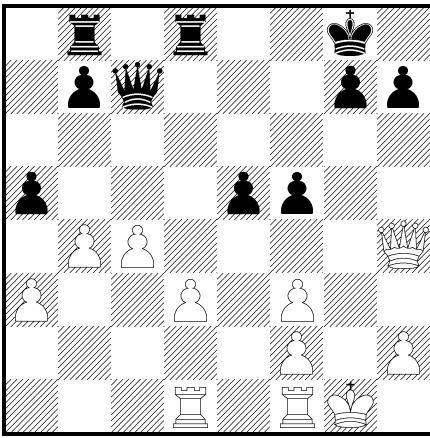
ĈNT

LX



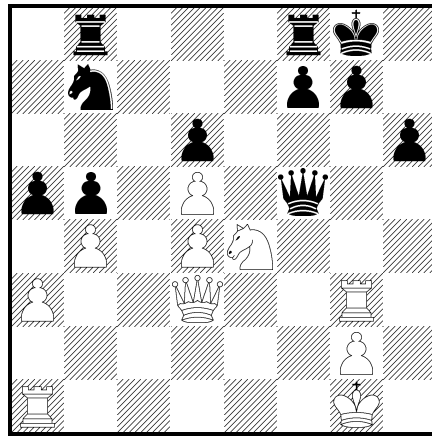
BNT

LXI



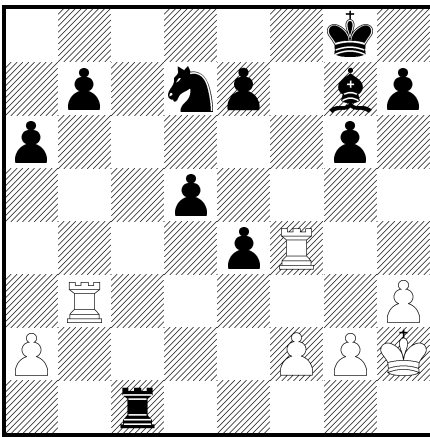
ČNT

LXIV



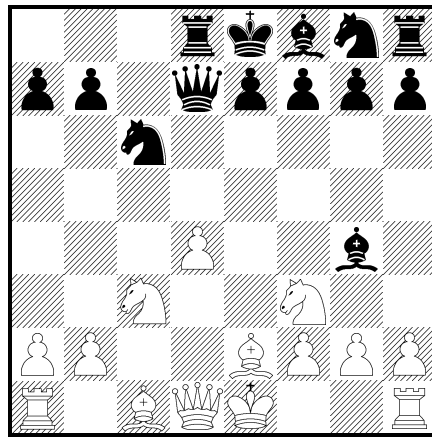
BNT

LXII



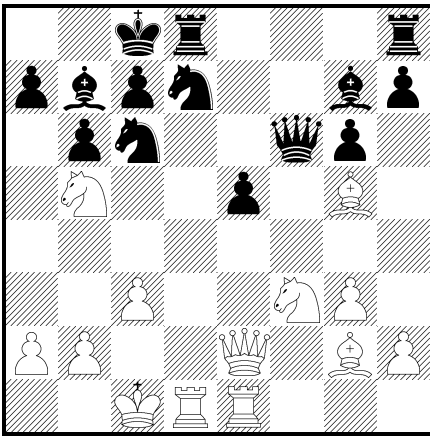
ČNT

LXV



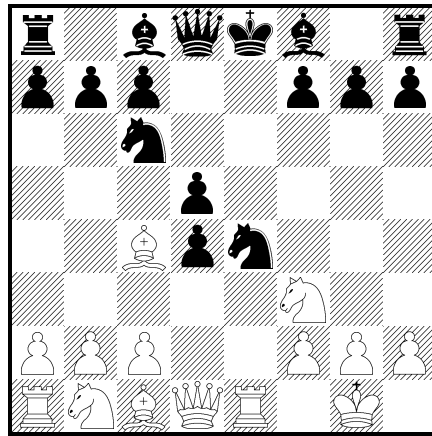
BNT

LXIII



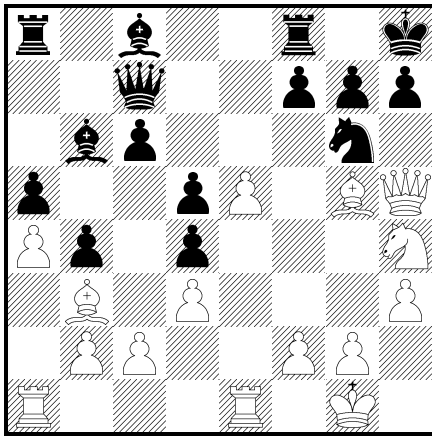
ČNT

LXVI



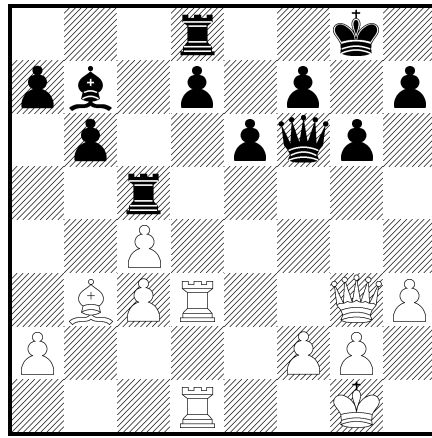
BNT

LXVII



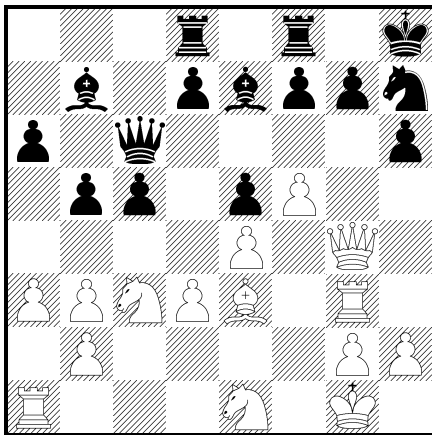
BNT

LXX



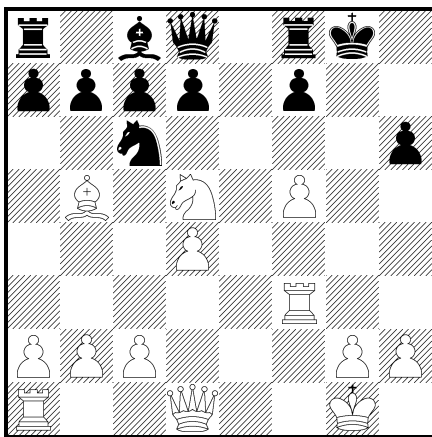
ČNT

LXVIII



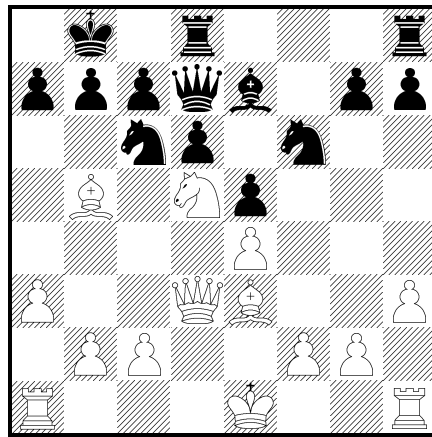
Může černý ♞g5 ? Co odpoví bílý?

LXIX



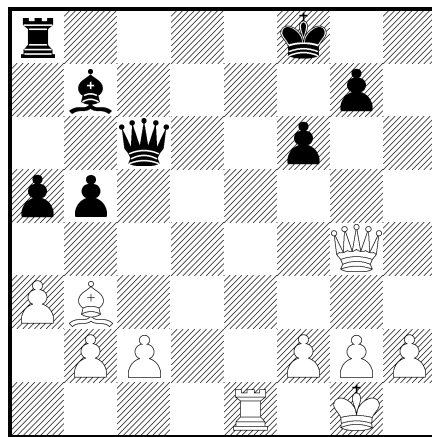
BNT

LXXI



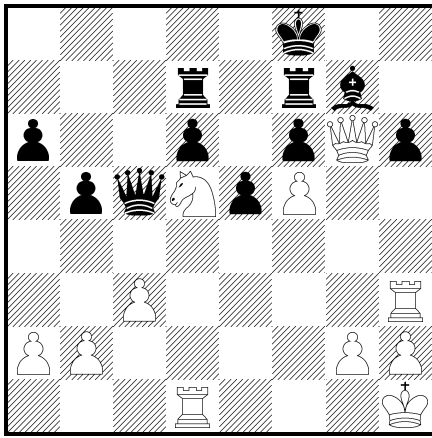
BNT

LXXII



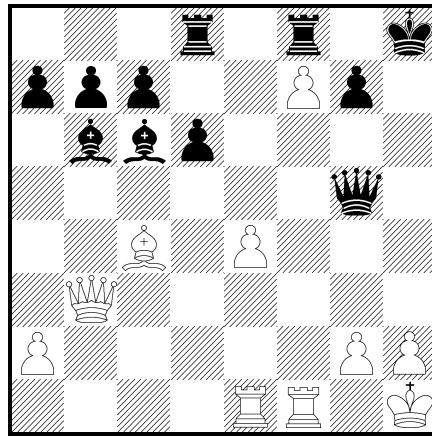
BNT

LXXIII



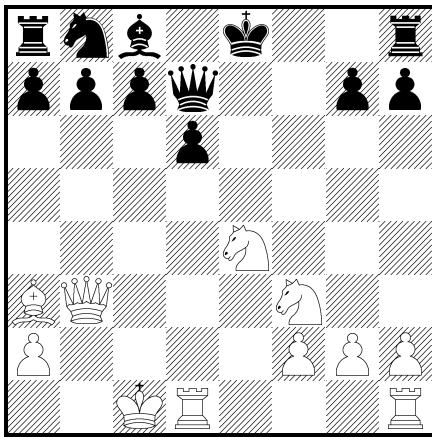
BNT

LXXVI



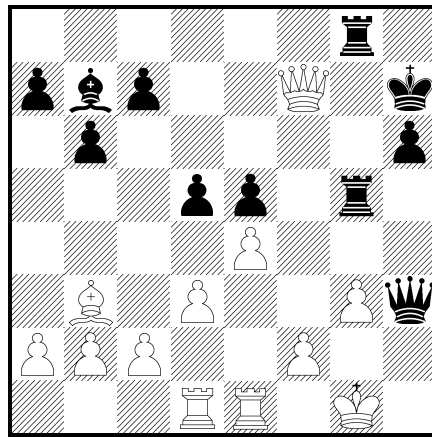
BNT

LXXIV



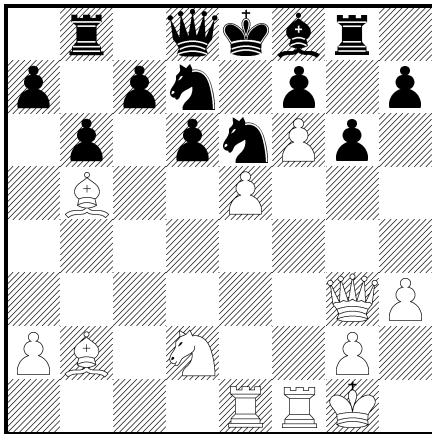
BNT

LXXVII



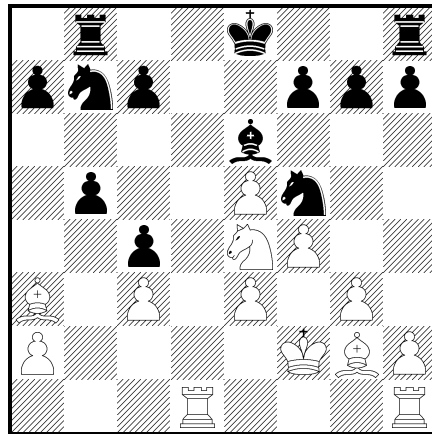
ČNT

LXXVII



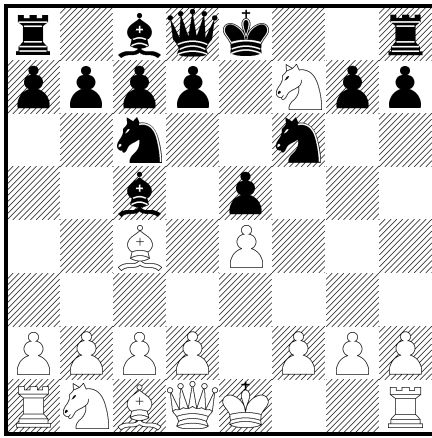
BNT

LXXVIII



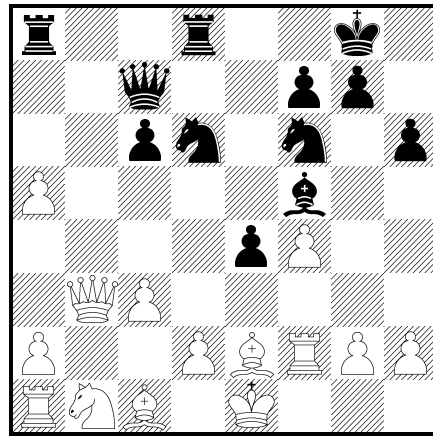
BNT

LXXIX



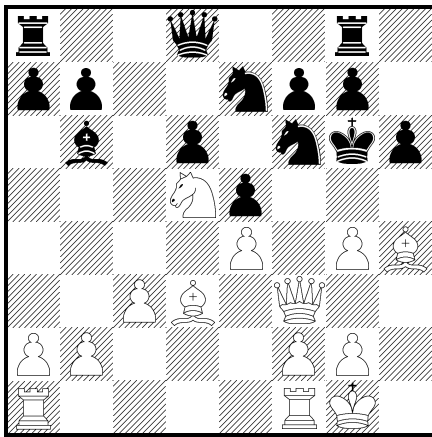
ČNT

LXXXII



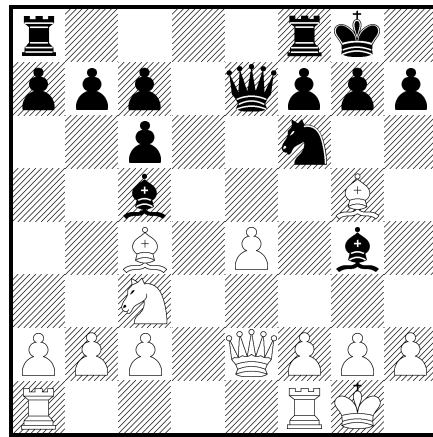
ČNT

LXXX



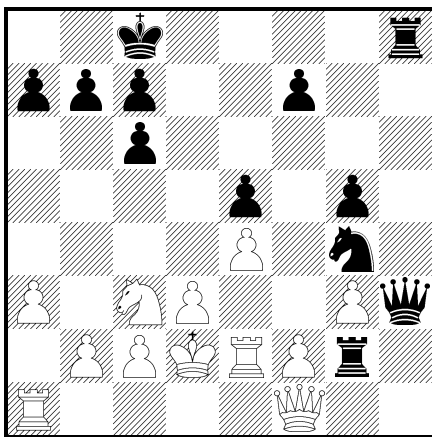
BNT

LXXXIII



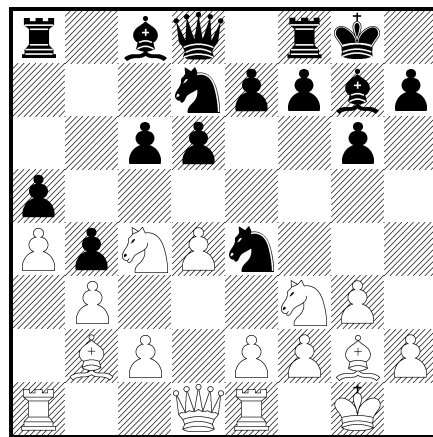
BNT

LXXXI



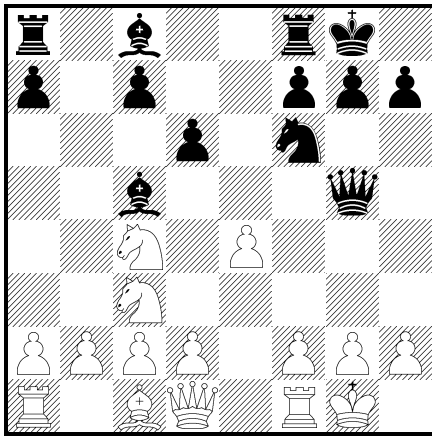
ČNT

LXXXIV



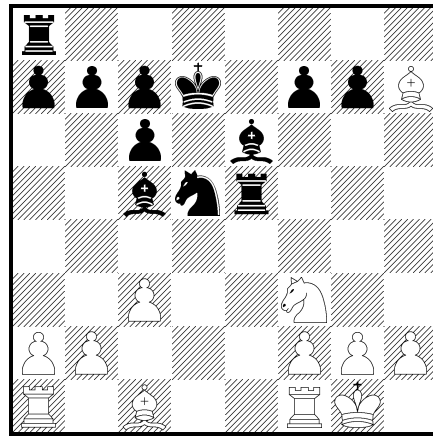
BNT

LXXXV



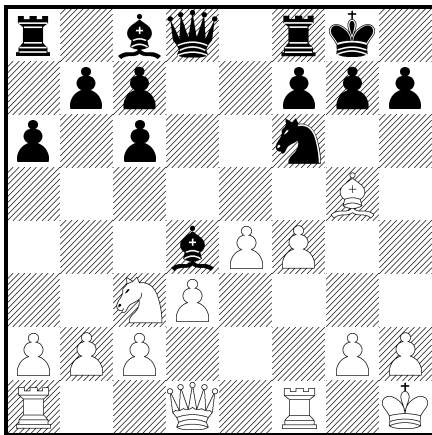
BNT

LXXXVIII

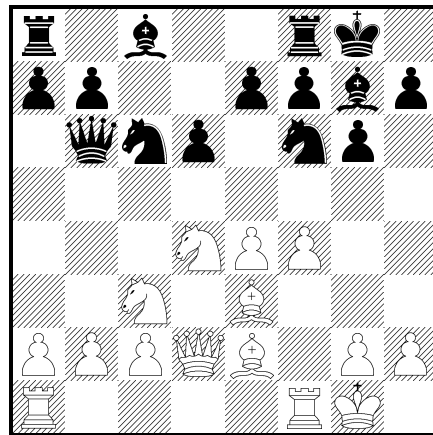


Černý zahrál ... ♖e2, co odpověděl bílý?
LXXXIX

LXXXVI

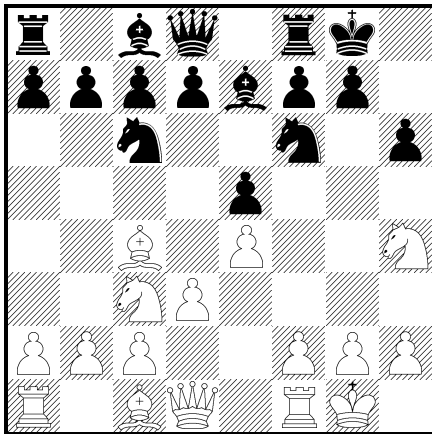


Černý zahrál ♗g4 – co odpoví bílý?
LXXXVII

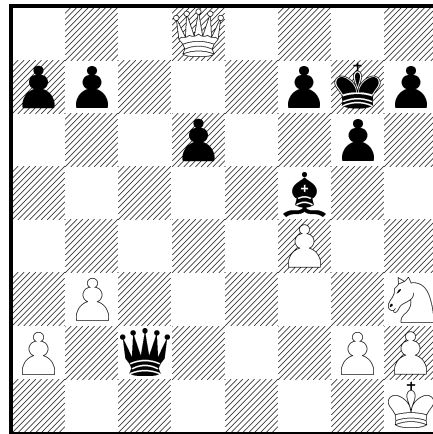


ČNT

XC

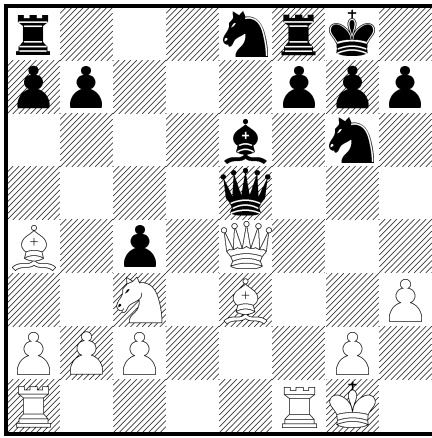


ČNT



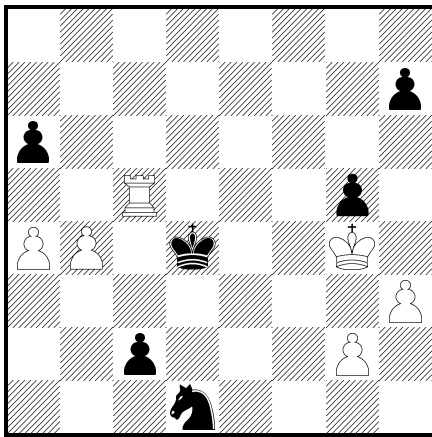
ČNT

XCII



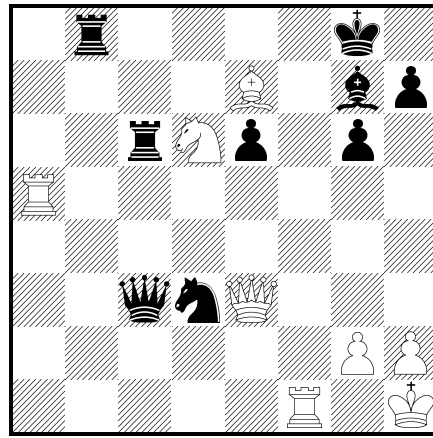
BNT

XCIII



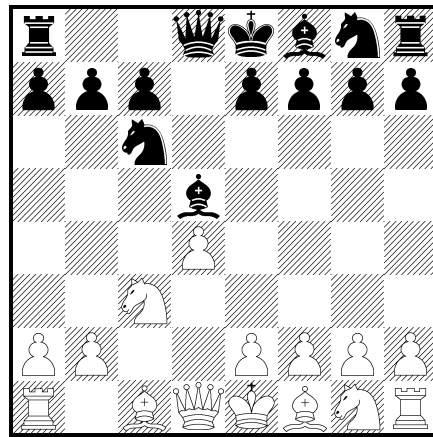
ČNT

XCIV



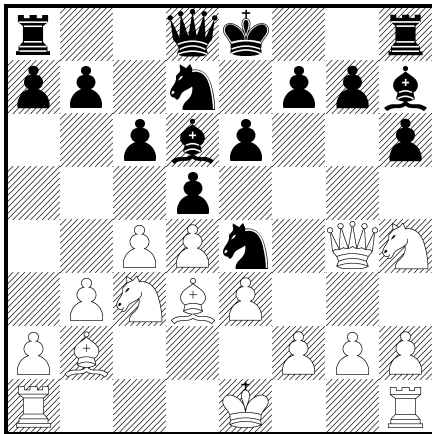
BNT

XCV

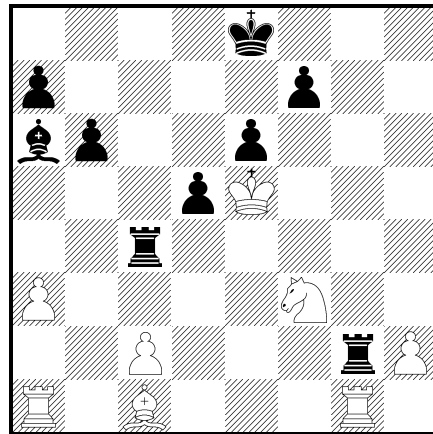


BNT

XCVI

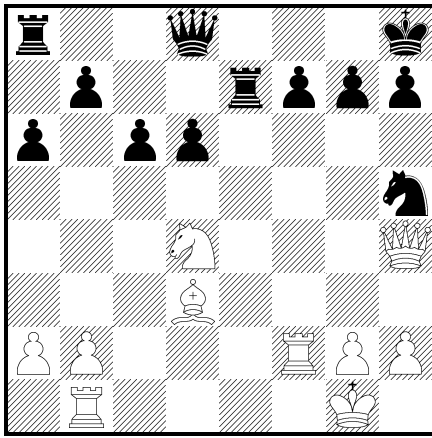


ČNT



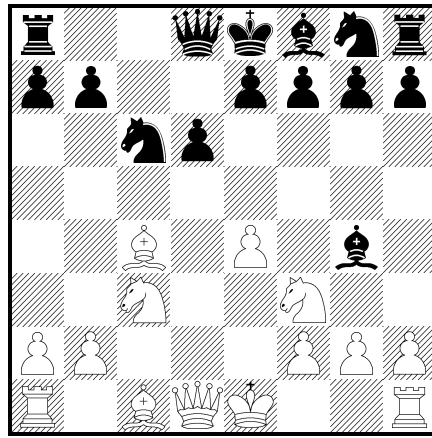
ČNT

XCVII



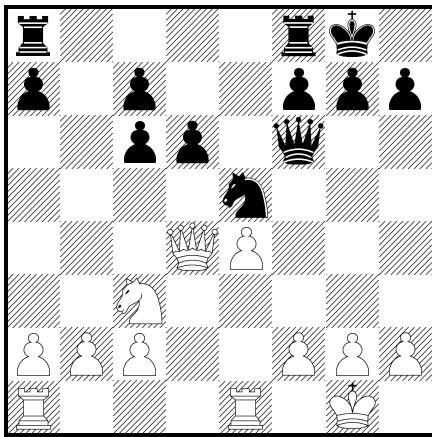
ČNT

C



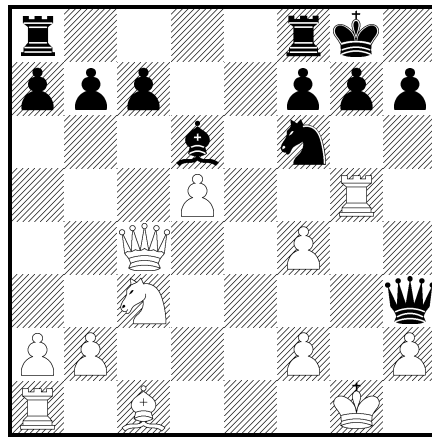
BNT

XCVIII



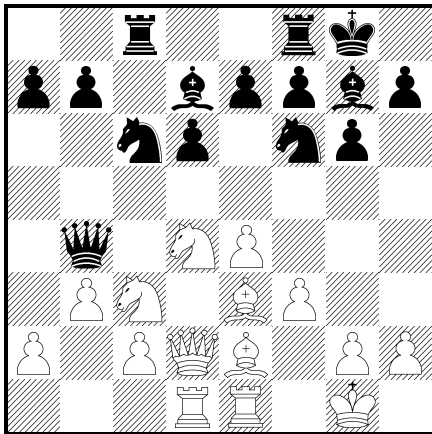
ČNT

CI



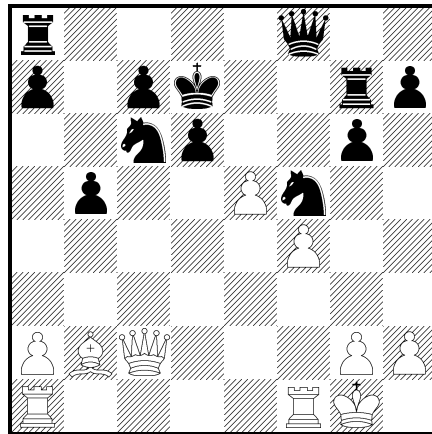
ČNT

XCIX



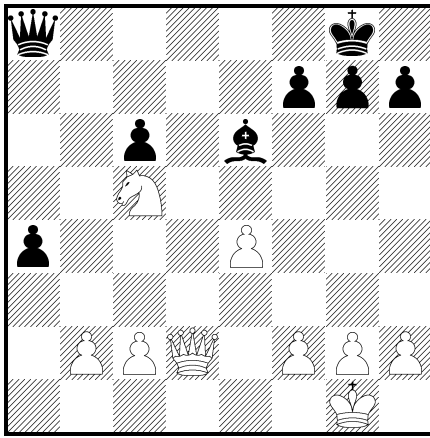
ČNT

CII



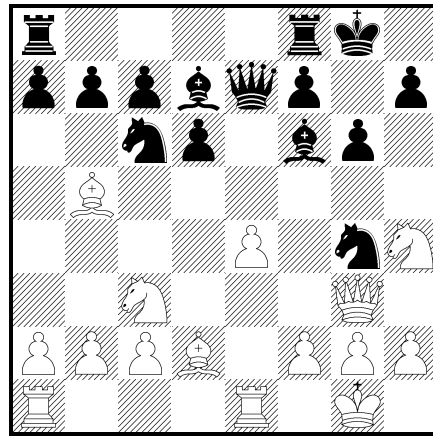
BNT

CIII



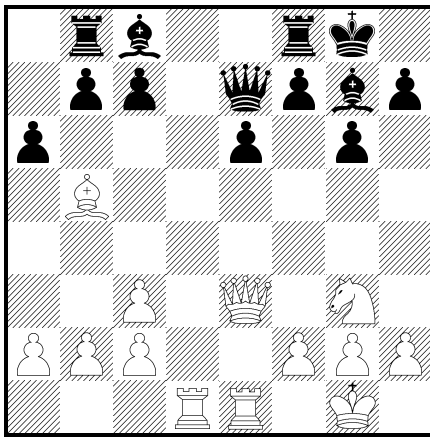
BNT

CVI



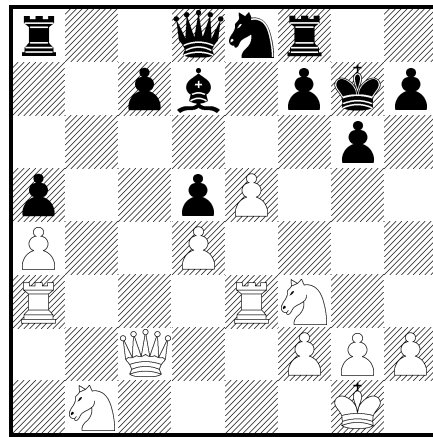
BNT

CIV



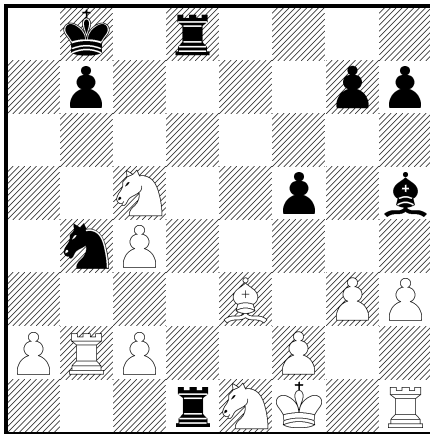
BNT

CVII



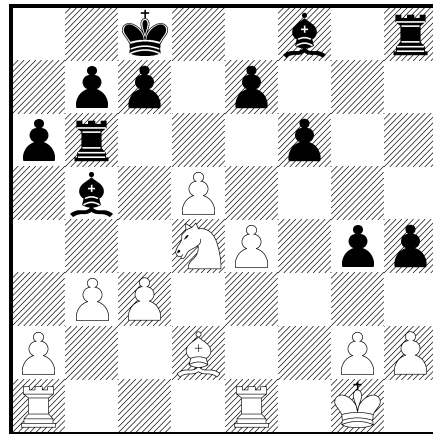
ČNT

CV



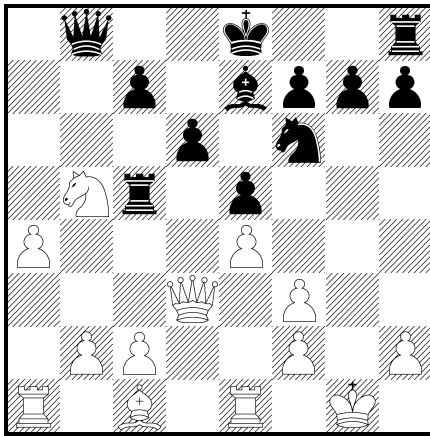
ČNT

CVIII



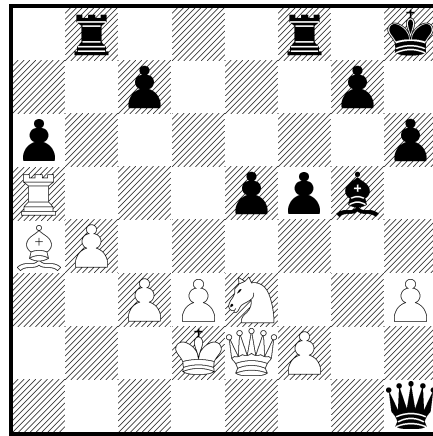
BNT

CIX



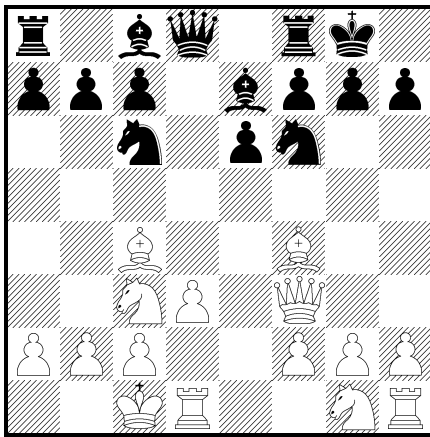
BNT

CXII



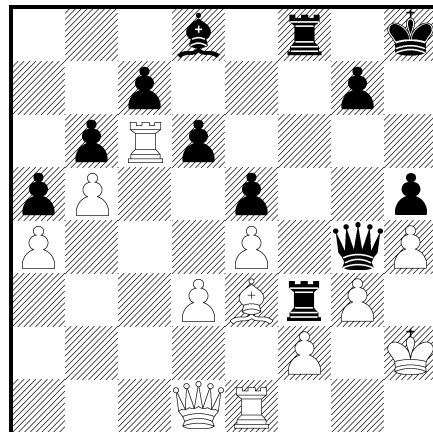
ČNT

CX



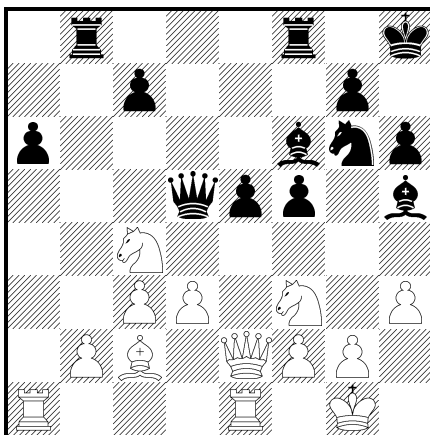
ČNT

CXIII



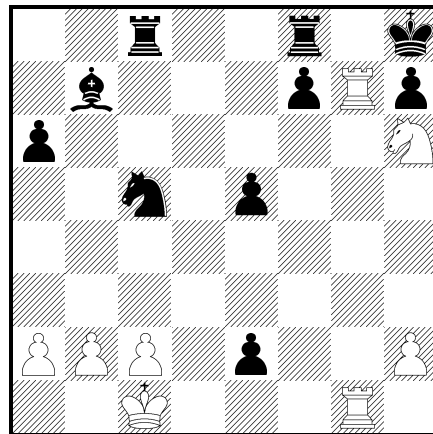
ČNT

CXI



ČNT

CXIV



BNT

Všechny uvedené partie pochází z mistrovství republiky v mládežnických kategoriích. Jako pomůcku pro řešení uvádíme u jednotlivých diagramů motivy taktických obrátů.

- **Dvojúder:** I-XXXVI
- **Vazba:** IX, XXXVII-LXVII
- **Útok na krále:** XLVII, XLVIII, LXIV, LXVIII-LXXXI, CXI, CXIII
- **Přetížená figura:** LXXXIII, LXXXVI
- **Odtažené napadení:** LXXXII, LXXXIV, LXXXV, LXXXVII, LXXXIX, XCIII, XCVII – C, CII, CXII
- **Chycení figury:** LXXXVIII, XCV, CI, CIV, CVIII, CIX
- **Mat:** XC, XCIV (5. tahem), XCVI (3. tahem), CXIV
- **Zisk materiálu:** LXXXI, XCI (kvalita)
- **Překrytí dráhy:** XCII, CVI
- **Slabá 8. (1.) řada:** CIII, CV
- **Útok na figuru:** CVII
- **Napadení:** CX